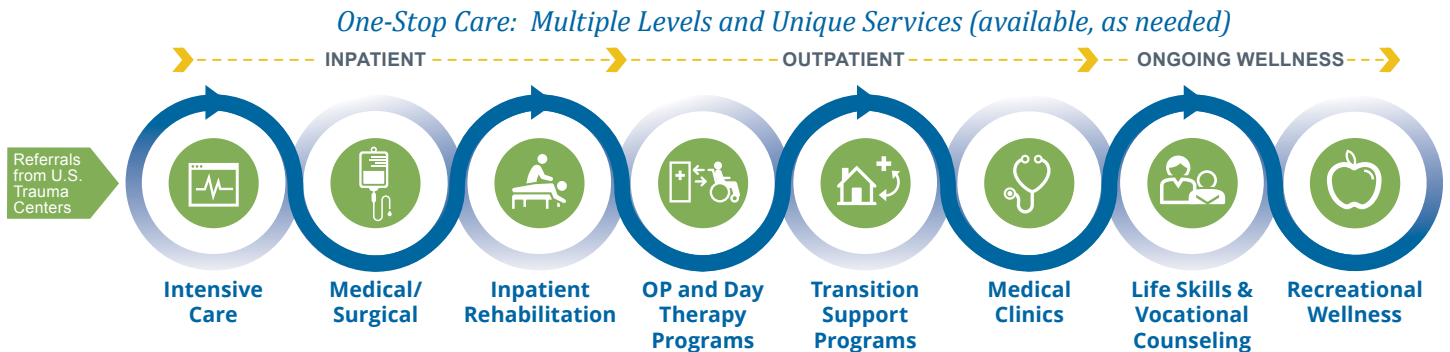




Why Shepherd?

COMPREHENSIVE CONTINUUM OF CARE

Patients at Shepherd Center in Atlanta get more than comprehensive medical and rehabilitation care. They have an experience that brings healing and hope through our specialized, comprehensive services. Uninterrupted and customized care across the continuum optimizes patient outcomes after discharge.



BOARD-CERTIFIED PHYSICIANS

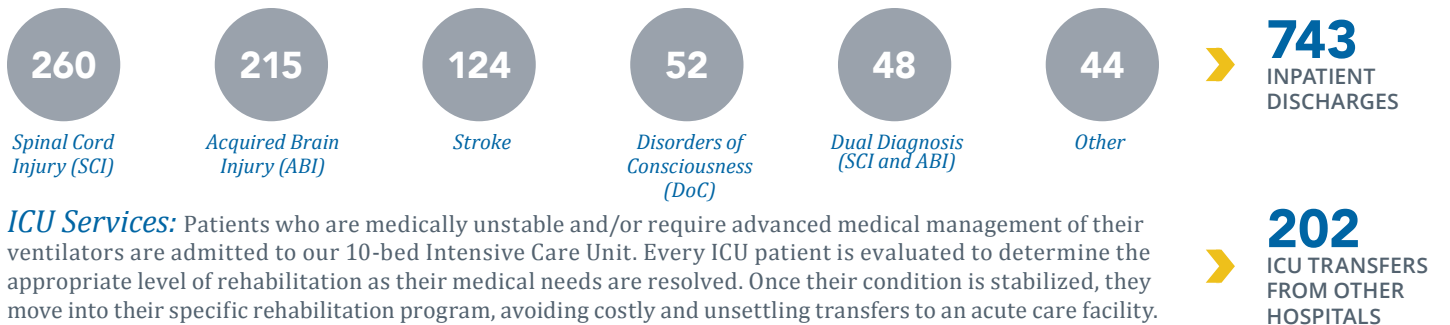
Our team of 21 highly specialized, experienced physicians are dedicated to helping patients rebuild their lives. Access to a higher level of expertise results in better care outcomes for those we serve.

Percentage of Physicians by Board Certification

Physical Medicine and Rehabilitation (PM&R)	71%
Neurology.....	19%
Internal Medicine.....	10%

INPATIENTS SERVED

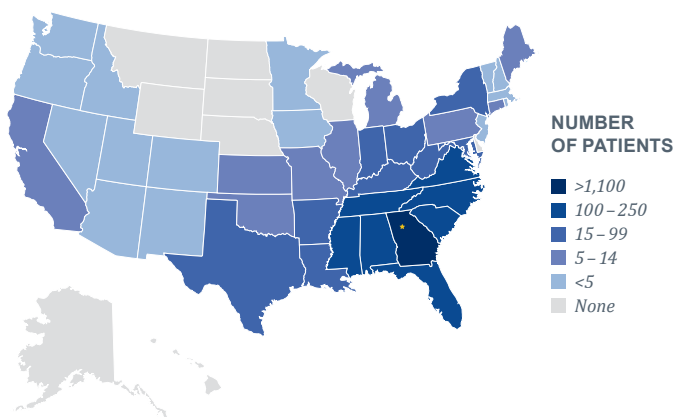
Shepherd Center has grown to a world-renowned, 152-bed hospital that treats 700 to 950 inpatients each year. Patients travel from across the nation and world to Shepherd Center for its innovative brand of neurorehabilitation. The average age of patients treated in FY 2021 was 41 years old, ranging from young adolescents to patients in their nineties.



SERVING PATIENTS ACROSS THE NATION

Shepherd Center in Atlanta has treated more than 15,000 inpatients from all 50 U.S. states and more than 50 foreign countries and territories since 1996.

Admissions By State: 2016-2020 (Calendar Years)



OUTPATIENT PROGRAMS & SERVICES

More than 7,500 individual patients benefited from Shepherd Center's outpatient programs and services, including telehealth, in FY 2021.

Transition Support Services

High-risk patients stay healthy at home and lower their risk of rehospitalization through the support of our professional team of nurses, case managers, life skills coaches and vocational counselors.

Outpatient Rehabilitation and Day Program Specialty Services

Progressive therapy programs enable patients to continue their recovery and achieve functional gains to perform the skills necessary for community reintegration.

Medical Clinics

Comprehensive care programs at Shepherd Center treat the array of secondary conditions that may affect people with spinal cord injury, brain injury, multiple sclerosis and other neurological conditions.



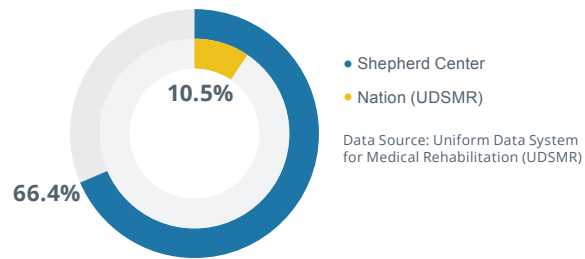
Demonstrating Excellent Outcomes

TREATING PATIENTS WITH TRAUMATIC INJURIES

Volume matters. Expertise in caring for people with catastrophic injuries leads to superior patient outcomes.

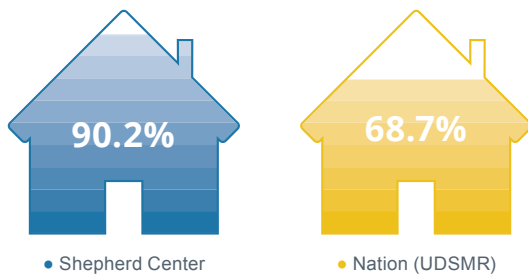
At Shepherd Center, 66% of rehabilitation patients treated have traumatic injuries, compared to less than 11% of rehabilitation patients treated across the nation.

Proportion of Patient Volume with Traumatic Injuries



RETURN TO COMMUNITY

More patients return to their home setting after undergoing rehabilitation at Shepherd Center.

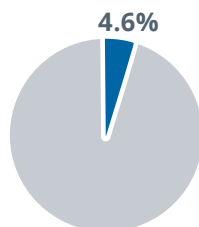


Data Source: Uniform Data System for Medical Rehabilitation (UDSMR)

REHOSPITALIZATION

In addition to returning home, patients discharged from Shepherd Center are more prepared to safely remain at home. Only 4.6% of patients who discharged to the community in FY 2021 required rehospitalization within 30 days.

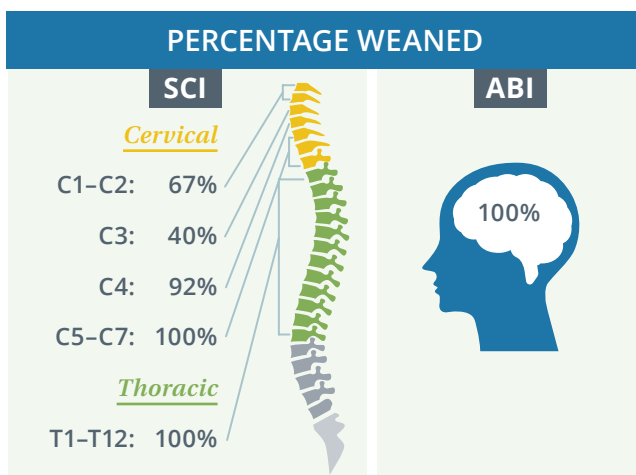
30-Day Rate of Rehospitalization



Data Source: Patient-Reported Outcomes via Phone Survey

VENTILATOR MANAGEMENT

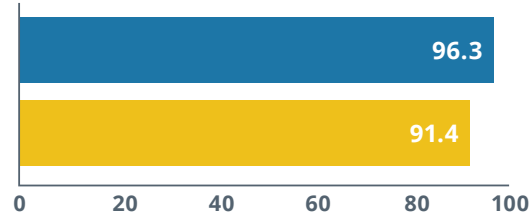
Some patients at Shepherd Center require ventilator management. Experienced healthcare specialists at Shepherd Center collaborate to successfully wean patients from ventilator dependence.



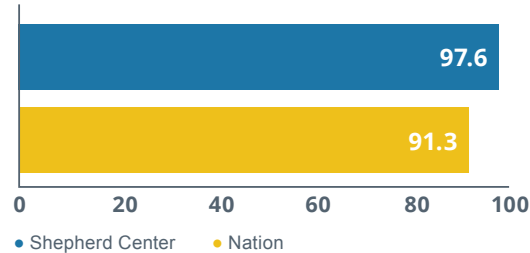
PATIENT SATISFACTION

Shepherd Center excels in providing an excellent patient experience. These results come from a survey provided to inpatients and their family members after they leave the hospital.

Overall Rating of Care



Likelihood of Recommending Facility



Data Source: Press Ganey Inpatient Rehabilitation Hospital Survey

LEARN MORE

Click the QR code or scan it with your phone's camera to read the FY2021 Quality and Patient Safety Report.



GIVE US FEEDBACK

Click the QR code or scan it with your phone's camera to give us feedback.

For a paper survey, contact Director of Quality and Outcomes Management at Jacqueline.Baron-Lee@shepherd.org or 404-367-1359

